



Zi Qi (Susannah) Zou, Art of Piano Participant Concert.
Photo by Rita Taylor.

Banff Centre's Endowment Program

“Endowments breathe life into almost every aspect of artists’ creative experience at Banff Centre. Particularly in this time of economic uncertainty, endowments provide strong and sustainable funding that allows Banff Centre to create a unique combination of people, programs, and place that gives artists the gift of mentorship, connections, and inspiration to last a lifetime.”

Chris Lorway, President and CEO
Banff Centre for Arts and Creativity

BANFF
CENTRE FOR ARTS AND CREATIVITY

Banff Centre Endowment Funds

Established in 1972



Banff Artist in Residence Mackenzie Browning.
Photo by Rita Taylor.

\$23.5 M in private sector contributions to endowments (Dec. 2004 to Nov. 2023), matched by **\$16.4 M** in funds through the Department of Canadian Heritage – Canada Cultural Investment Fund: Endowment Incentives Component. Over the past 19 years, this federal contribution has averaged **69.8 cents for every dollar donated**.

Banff Centre received

\$490,664

in endowed donations between December 2022 and November 2023, with a federal contribution of **58.9 cents for every dollar donated** through the Canada Cultural Investment Fund: Endowment Incentives Component: **\$288,949**.

In 2023-24, **\$3.152 M** in endowment earnings was drawn into Banff Centre's operating budget to support programming—including approximately **\$1.444 M** in scholarships to support nearly **426** participants in Banff Centre arts and leadership programs, with the balance supporting faculty, fellowships, master artists, and programming costs.



Chamber Music & Opera: Interplay Masterclasses with Jason Ferrante. Photo by Rita Taylor.

Bringing artists, leaders, and communities together to create, collaborate, learn, and be inspired is at the heart of Banff Centre’s mission.

A residency at Banff Centre connects artists with mentors, peers, and an international artistic community—it helps put their work on stage and on display, and gives them the confidence for a successful career in the arts. But for many artists, the transformative experience of attending a program at Banff Centre would not be possible without financial support.

Endowed gifts support hundreds of artists to attend world-class training programs at Banff Centre each year. Endowments provide stable funding that allows Banff Centre to consistently deliver innovative training programming across art forms, attract internationally celebrated artists as our faculty, and maintain our world-class learning facilities.

The impact of endowments is felt by arts program participants every single day at Banff Centre. Endowed funds are a catalyst in our ability to offer exceptional learning experiences, encourage art forms to thrive, and enrich communities—across Canada and around the world.



Adoration rehearsal at Banff Centre.
Photo by Rita Taylor.

ENDOWMENT FUNDS AT BANFF CENTRE

**Supporting transformative
artistic and career development
experiences**

Alumna Profile: Miriam Khalil



Four months into the beginning of her journey into motherhood, Lebanese-Canadian soprano Miriam Khalil came to Banff Centre as part of a new chapter in her artistic journey. It was 2014, and Miriam was attending the *Open Space: Opera in the 21st Century* performance-based training program for emerging opera professionals.

“I was transitioning into full lyric repertoire from light lyric and needed a safe and nurturing environment to do so safely and successfully.” As part of the program, Miriam was coached in the part of Elvira in the opera entitled *#Uncle John* (Donna Elvira in *Don Giovanni*), which has since become one of her signature roles. The creation of *#Uncle John* was a partnership between Banff Centre, Against the Grain Theatre, Canadian Opera Company, and Parks Canada, and provided opera professionals with an intensive, collaborative training experience that challenged the conventions of opera performance, production, and design.

Miriam attests that her time at Banff Centre was a tremendously important learning experience:

“I learned a lot about myself and about my artistry. I also was learning to be a new mom and how to balance my career with my personal life in a whole new way. Being there gave me the space and the permission to work on different repertoire and to grow as an artist and as a person. The staff was incredibly supportive and knowledgeable; the surroundings were inspiring and enriching.”

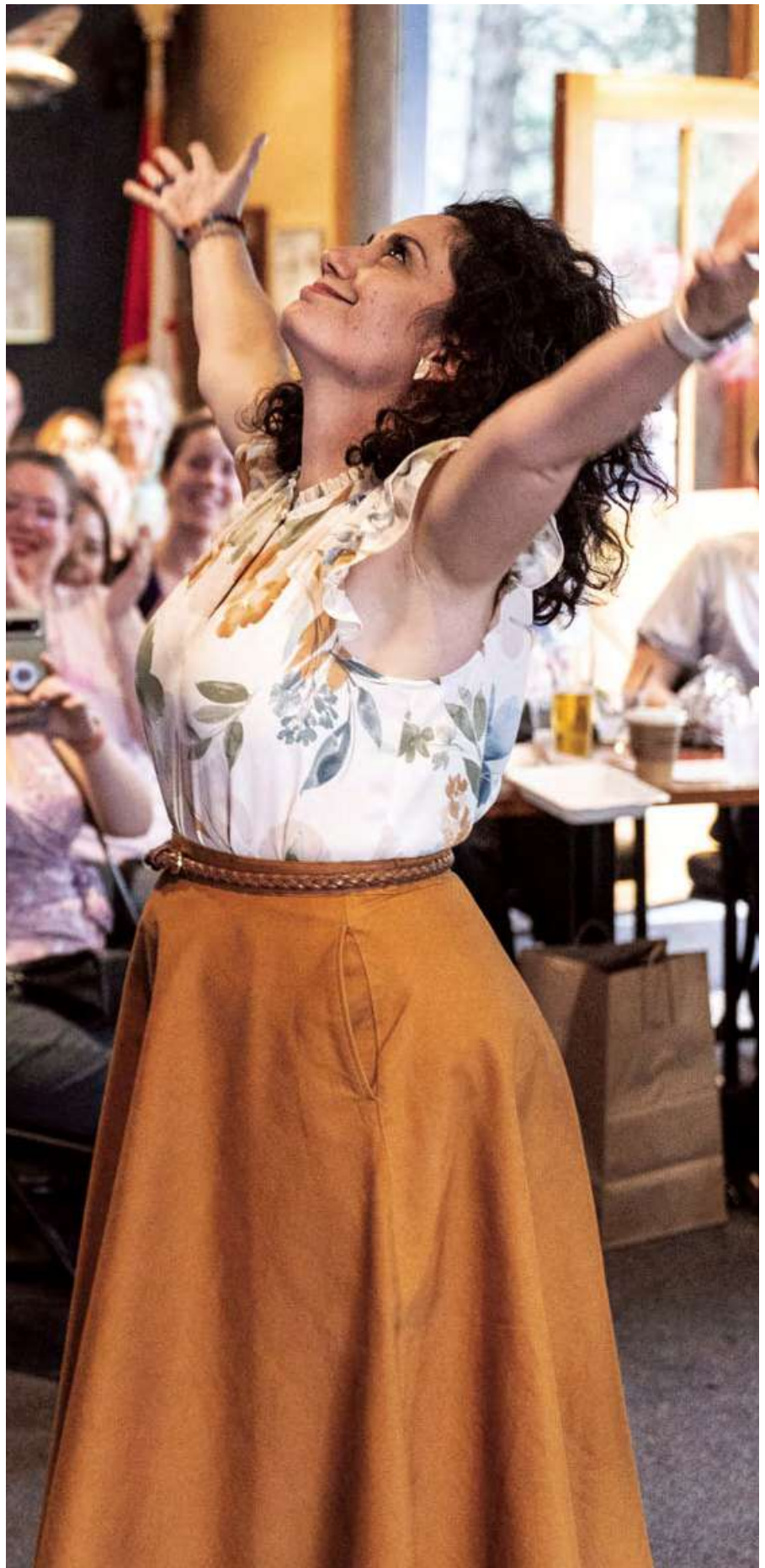
Her career trajectory since Banff Centre has been on a significant rise. Miriam now sings full lyric soprano roles and has made a very successful change to bigger and fuller repertoire. She has been honoured with two JUNO Award nominations, has established herself as one of Canada’s most versatile and expressive performers, and is becoming increasingly known for her non-traditional performances of opera, art song, and concert repertoire.

She has sung on opera stages across North America and the U.K., and made her much anticipated major role debut with the Canadian Opera Company as Mimi in *La Bohème* in 2019. Since then, she has made debuts with Vancouver Opera, Newfoundland Symphony Orchestra, Vancouver's Music in the Morning, and in New York City with Beth Morrison Projects in the world premiere of *Mary Kouyoumdjian* and Royce Vavrek's opera *Adoration*.

Miriam's training and experience at Banff Centre was made possible through the T.C. Hargrave Scholarship in Voice—an endowment for a student who shows a clear potential for a vocal career.

As an emerging artist and a new mother, the scholarship made the difference between her ability to attend Banff Centre or not.

Miriam underlines how critically important the generosity of donors is to provide opportunities for artists facing the steep challenges of a career in the arts today: "This is a difficult time in the arts. Most musicians are juggling so much in their lives just to live a life in the arts. Being at Banff Centre gives artists the tools and the outlet to perform and to hone their skills in a focused and inspiring place with the right support ... [it provides] the best circumstances for artists to grow and learn to the best of their ability."



Miriam Khalil during OperaPub.
Photo by Rita Taylor.



August Klintberg in studio.
Photos by Kyla Jacobs.

“Banff Centre has been –for almost two decades– one of the biggest supporters of my artistic path [it] has become a pivotal place in my practice. Being here, I’m always surprised by what I learn about my work and the practices of my peers.

... Your financial support has such meaning for me and other artists. Not only does it make this residency financially possible for me, but it also indicates how much art itself matters.”

August Klintberg, visual artist, writer, art historian
Recipient of the Paul D. Fleck Fellowships in the Arts
Endowment in 2009 and the
Gay Mitchell and Archie McIntosh Creation
Endowment Fund in 2023





Interplay Concert EPIC. Trip: Alex Huyghebaert (flute), Ehrentraud Moser (violin), Simon Proulx (clarinet). Photo by Rita Taylor.

LEVERAGING YOUR ENDOWED GIFT TO SUPPORT FUTURE ARTISTIC PROGRAMS AT BANFF CENTRE

It's a simple equation: the more funds available to build an endowment, the more support Banff Centre can provide artists through crucial career and creative development programs.

That's why it's so exciting to be able to increase the impact of your investment with matching funds from the Department of Canadian Heritage's Canada Cultural Investment Fund: Endowment Incentives Component.

* The rate of the Canada Cultural Investment Fund's annual match depends on the overall demand from grantees and funds available in any given year.

This federal government funding program helps arts organizations, like Banff Centre, remain strong and vibrant within their communities and beyond by fostering a climate that encourages endowed donations.

Together, your investment and Canada Cultural Investment Fund matching funds will secure the future of Banff Centre's work in training professional artists—and in the creation, production, and presentation of their work.

Donations received by November 15 will be included in Banff Centre's annual application for matching funds from the Canada Cultural Investment Fund, which over the past 19 years has matched donations at an average rate of 69.8%*.

Creating an endowment in your name at Banff Centre

You can establish an endowment in your or a loved one's name with an initial donation to Banff Centre of at least \$50,000. These funds will be

invested in perpetuity through The Banff Centre Foundation. A minimum of 5% of the earnings from your endowment will be used to support your gift's intended purpose each year.

The matching funds received as a result of your gift through the Canada Cultural Investment Fund will be applied to the **Endowment for Arts Programming** at The Banff Centre Foundation to support Banff Centre's work in delivering the transformative training and life-changing experiences artists need for a successful, future-looking career.

Your support helps us look ahead to a bright future for artists in Canada.

Let's discuss what's possible:

403.762.6430
1.888.495.4467
support@banffcentre.ca
www.banffcentre.ca/support

Charitable Registration Numbers:
(Canada) 11921 4955 RR0001 - (US) 98-0078729



Banff Centre campus. Photo by Katy Whitt

About Banff Centre

Founded in 1933, Banff Centre for Arts and Creativity is a post-secondary institution built upon an extraordinary legacy of excellence in artistic and creative development. What started as a single course in drama has grown to become a global organization leading in arts, culture, and creativity across dozens of disciplines. From our home in the stunning Canadian Rocky Mountains, Banff Centre for Arts and Creativity aims to inspire everyone who attends our campus—artists, leaders, and thinkers—to unleash their creative potential.

**Jennifer Lamb, Director – Major Gifts
Development Office**

403.763.6005
Jennifer_Lamb@banffcentre.ca

The Banff area, known as “Minihpa” (translated in Stoney Nakoda as “the waterfalls”) and the Treaty 7 territory and oral practices of the Îyârhe Nakoda (Stoney Nakoda)—comprised of the Bearspaw, Chiniki, and Goodstoney Nations—as well as the Tsuut’ina First Nation and the Blackfoot Confederacy comprised of the Siksika, Piikani, and Kainai. We acknowledge that this territory is home to the Shuswap Nations, Ktunaxa Nations, and Metis Nation of Alberta, Rockyview District 4. We acknowledge all Nations who live, work, and play here, help us steward this land, and honour and celebrate this place.

BANFF
CENTRE FOR ARTS AND CREATIVITY